

WE VALUE



YOUR HOME



Market Place, Wallingford

£250,000



Offered for sale with a tenant in situ and no onward chain, this spacious apartment is situated in the heart of Wallingford town centre and enjoys attractive views across the town. The accommodation comprises a stylish open-plan living area with a modern kitchen, a generous double bedroom, and a fully fitted shower room.



Allocated parking is provided to the rear, complete with an electric vehicle charging point.

Ideally positioned within easy reach of a wide range of amenities, this property represents an excellent investment opportunity, offering immediate rental income in a highly convenient town-centre location.





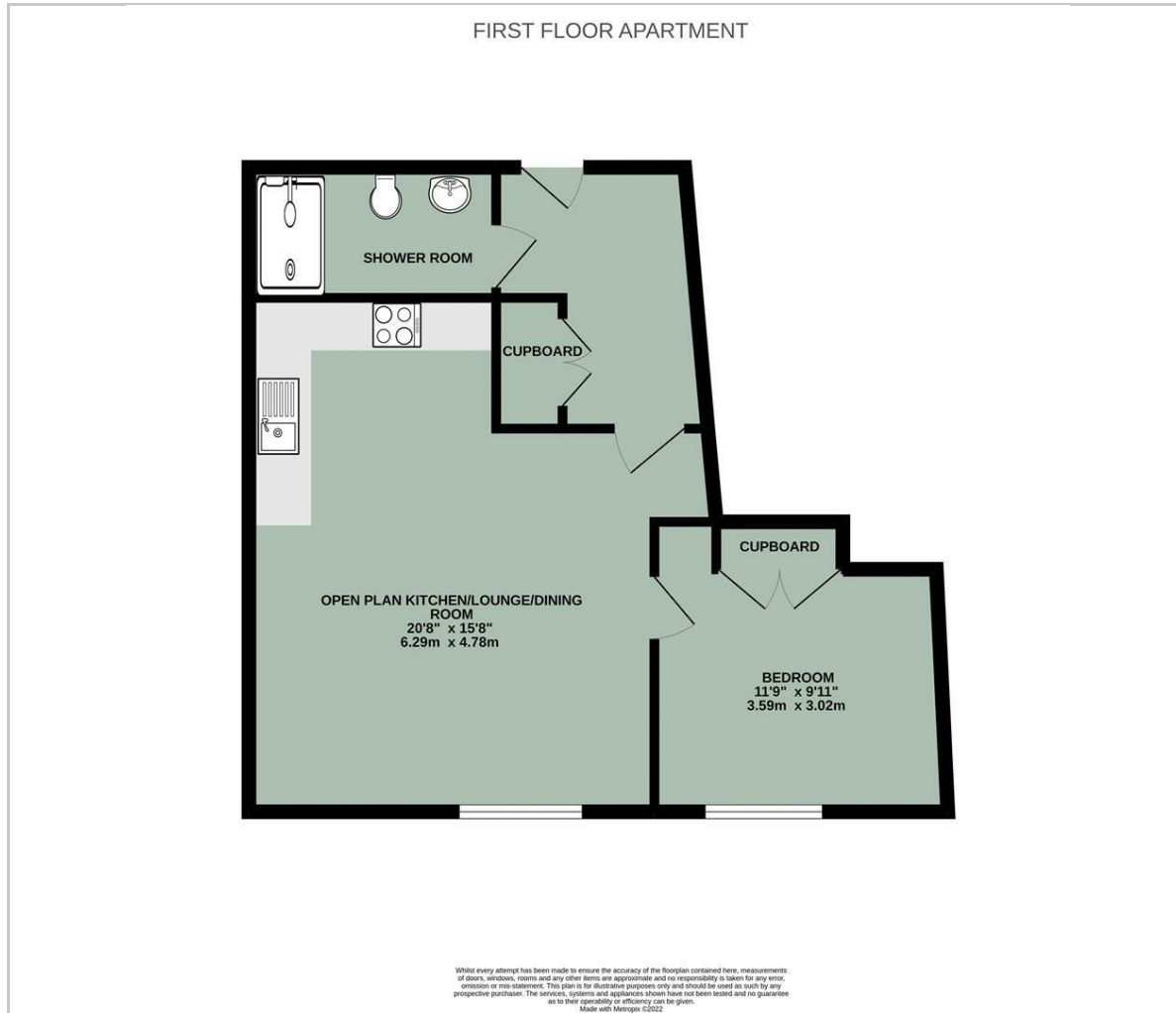
- OFFERED WITH A TENANT IN SITU & NO ONWARD CHAIN
- OPEN PLAN LIVING AREA & INTEGRATED KITCHEN
- ALLOCATED PARKING
- ELECTRIC VEHICLE CHARGING POINT
- DOUBLE BEDROOM
- INVESTMENT OPPORTUNITY
- TOWN CENTRE LOCATION



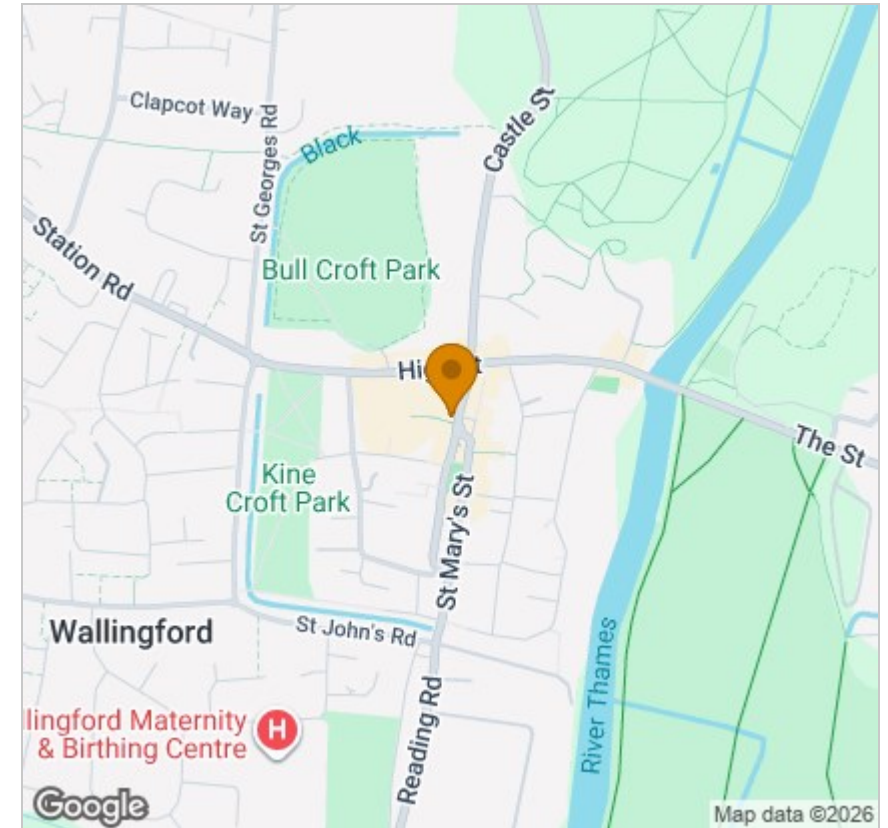
Energy Efficiency Rating		Environmental Impact (CO ₂) Rating	
	Current	Potential	
Very energy efficient - lower running costs			Very environmentally friendly - lower CO ₂ emissions
92 plus A			82 plus A
81-91 B			61-91 B
69-80 C			49-59 C
55-68 D			35-48 D
39-54 E			29-54 E
21-38 F			21-38 F
1-20 G			1-20 G
Not energy efficient - higher running costs			Not environmentally friendly - higher CO ₂ emissions
England & Wales	EU Directive 2002/91/EC		England & Wales
			EU Directive 2002/91/EC

Energy Efficiency Graph

Floor Plan



Area Map



Viewing

Please contact our In House Sales & Lettings Office on 01491 839999 opt.1 if you wish to arrange a viewing appointment for this property or require further information.

These particulars, whilst believed to be accurate are set out as a general outline only for guidance and do not constitute any part of an offer or contract. Intending purchasers should not rely on them as statements of representation of fact, but must satisfy themselves by inspection or otherwise as to their accuracy. No person in this firm's employment has the authority to make or give any representation or warranty in respect of the property.

28 St Martins Street, Wallingford, Oxfordshire, OX10 0AL
Tel: 01491 839999 opt.1 Email: sales@inhouseestateagents.co.uk www.inhouseestateagents.co.uk